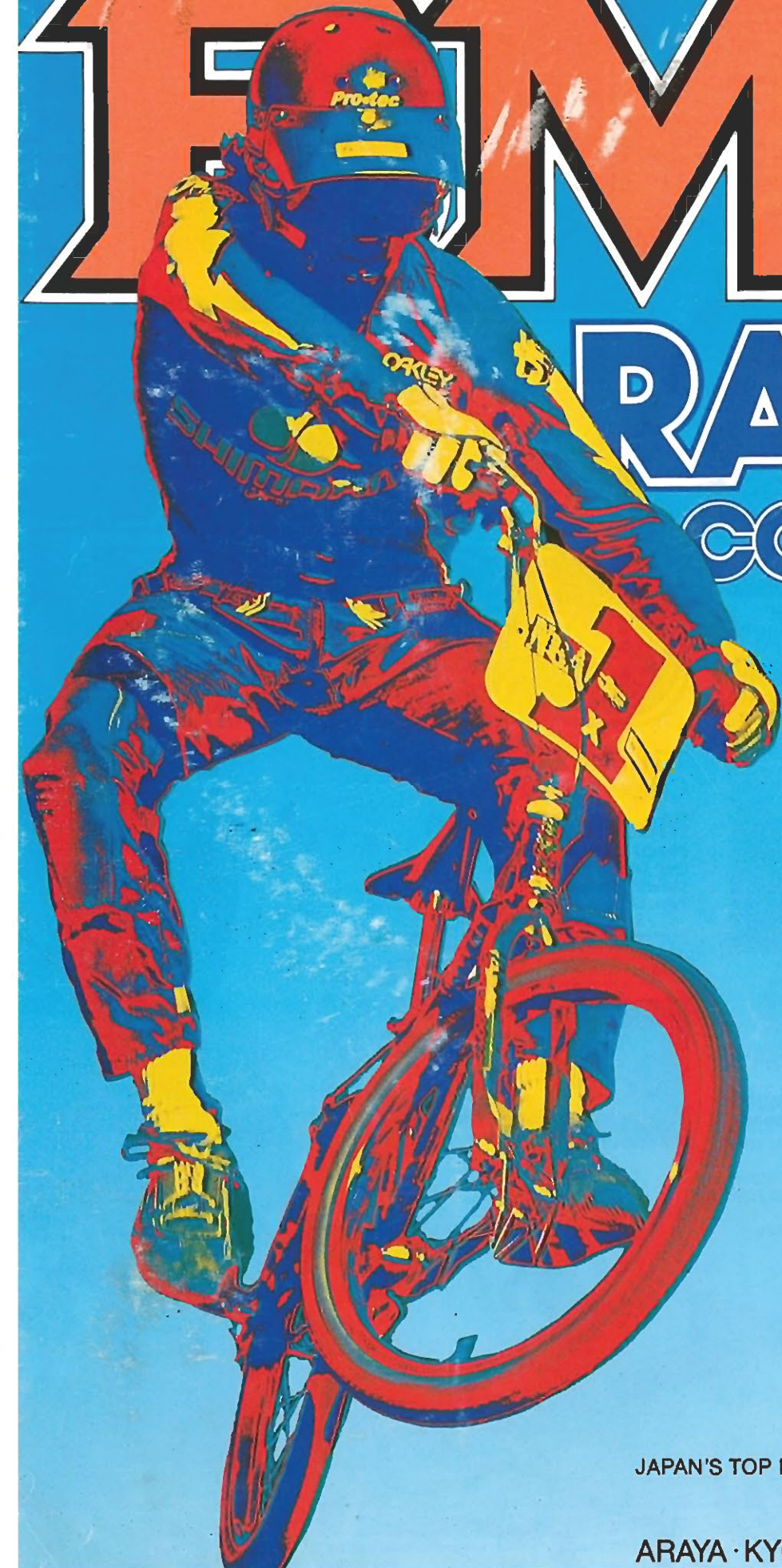


JBM

RACING COMPONENTS



JAPAN'S TOP BICYCLE PARTS MAKERS



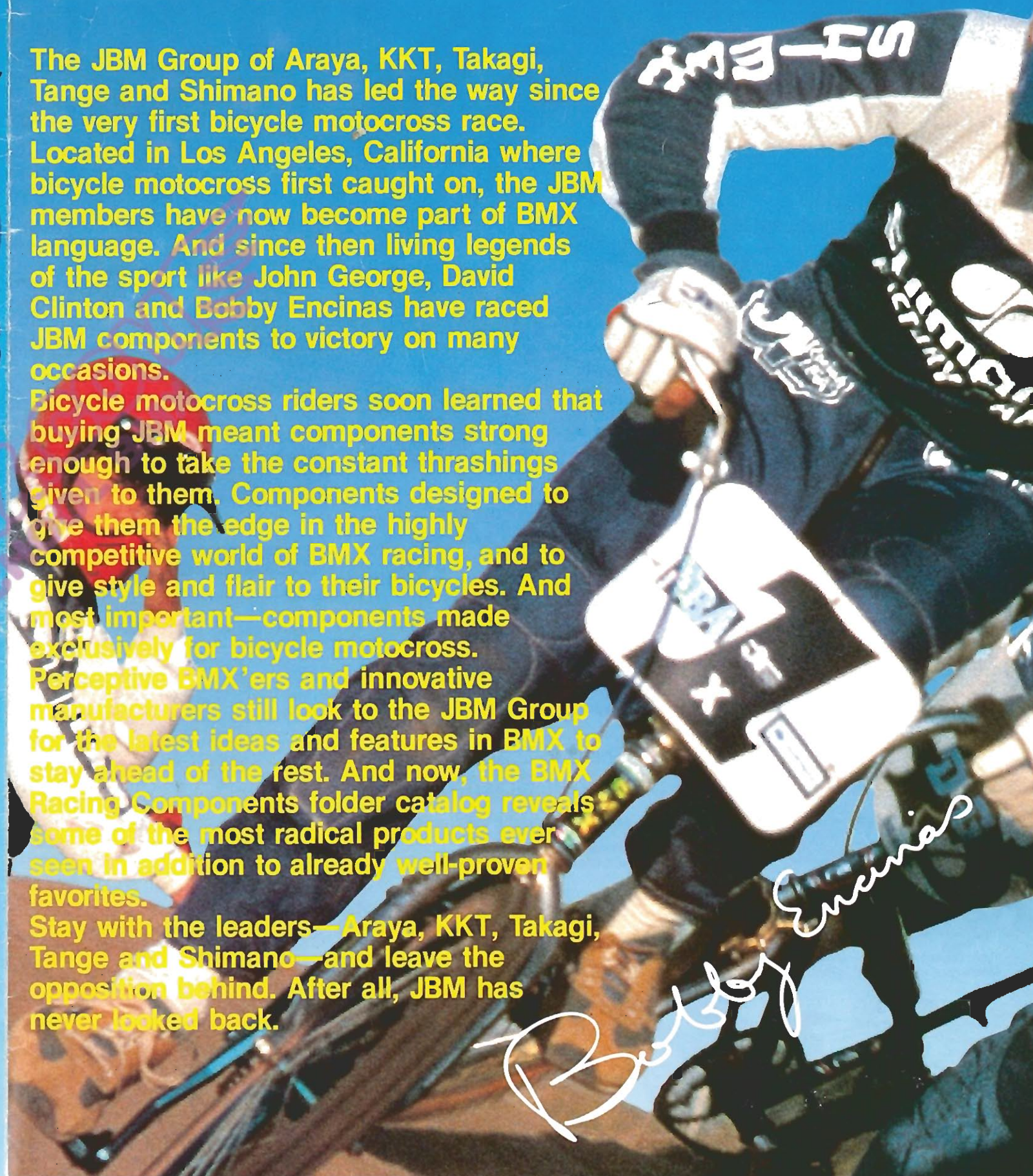
ARAYA · KYOKUTO · TAKAGI · TANGE · SHIMANO

RIGHT FROM

The JBM Group of Araya, KKT, Takagi, Tange and Shimano has led the way since the very first bicycle motocross race. Located in Los Angeles, California where bicycle motocross first caught on, the JBM members have now become part of BMX language. And since then living legends of the sport like John George, David Clinton and Bobby Encinas have raced JBM components to victory on many occasions.

Bicycle motocross riders soon learned that buying JBM meant components strong enough to take the constant thrashings given to them. Components designed to give them the edge in the highly competitive world of BMX racing, and to give style and flair to their bicycles. And most important—components made exclusively for bicycle motocross. Perceptive BMX'ers and innovative manufacturers still look to the JBM Group for the latest ideas and features in BMX to stay ahead of the rest. And now, the BMX Racing Components folder catalog reveals some of the most radical products ever seen in addition to already well-proven favorites.

Stay with the leaders—Araya, KKT, Takagi, Tange and Shimano—and leave the opposition behind. After all, JBM has never looked back.



Bobby Encinas

BMX RACING

Strong and Lightweight Components

The complete line of components offered by Araya, KKT, Takagi, Tange and Shimano all have this in common: They are tough while retaining the necessary lightness to give your BMX bicycle every chance for victory. The JBM manufacturers have been in BMX since the very beginning and they know what goes into a BMX bicycle. You can depend on JBM products just as everyone else in BMX does!

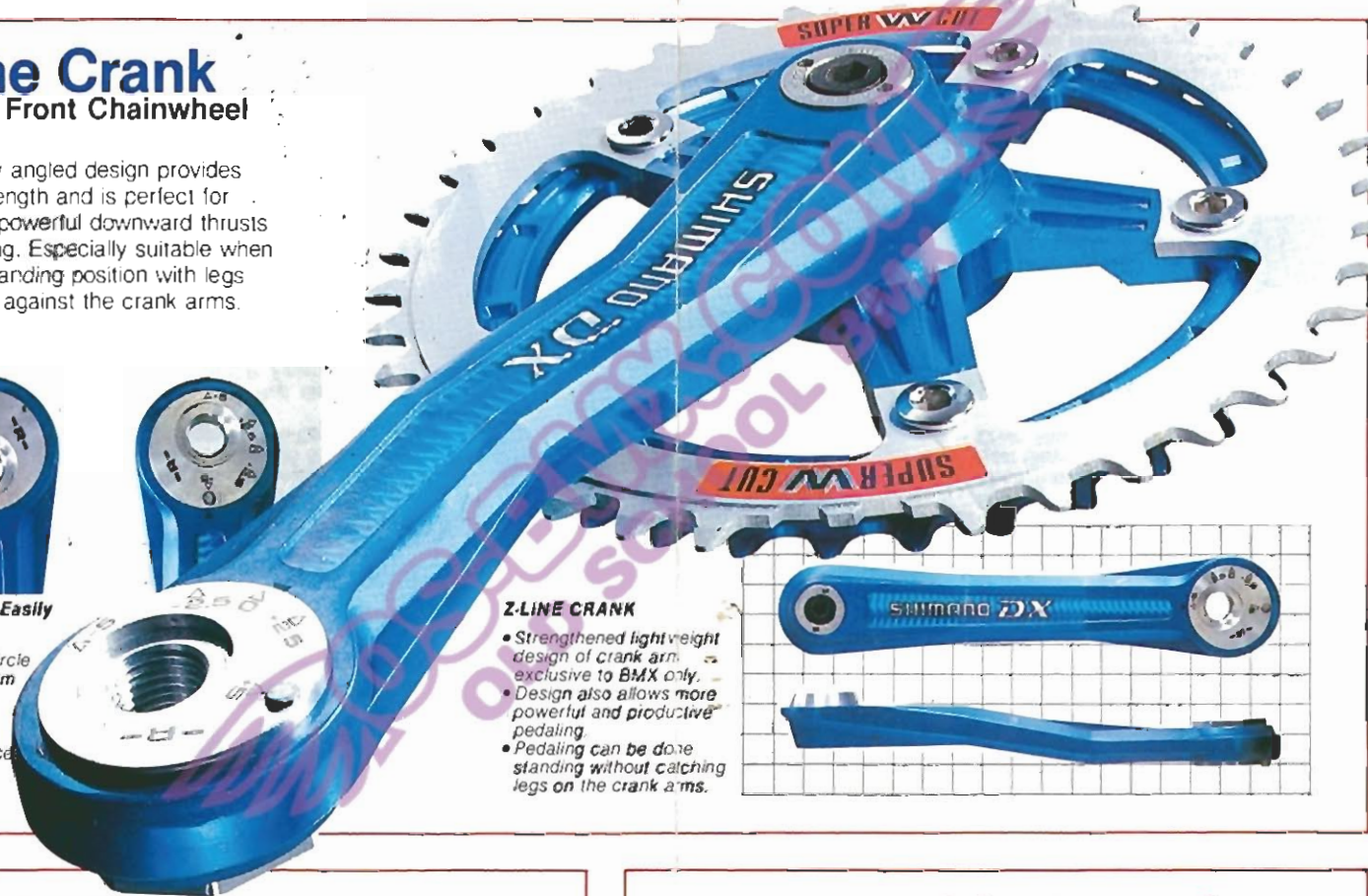
Z-Line Crank Shimano Front Chainwheel

The specially angled design provides optimum strength and is perfect for transmitting powerful downward thrusts while pedaling. Especially suitable when riding in a standing position with legs never hitting against the crank arms.



Crank Length Easily Changed!
An eccentric circle allows crank arm length to be changed according to rider preference.

- Z-LINE CRANK**
- Strengthened lightweight design of crank arm exclusive to BMX only.
 - Design also allows more powerful and productive pedaling.
 - Pedaling can be done standing without catching legs on the crank arms.



Araya Rim

Araya rims are famous for the amount of tough treatment they can take and still keep their shape. And moreover, lightness is kept to an absolute minimum by using aluminum. Circumference is always accurate and welding of the highest quality. Always check for the distinctive Araya logo.

Takagi Chainwheel

Strong and Precise, Takagi's Cr-Mo One Piece cranks and chainwheels are distinctively designed for BMX racing.

Tange TRX Front Fork

The Tange TRX Fork has oval tubing made from chrome moly for strength where it's needed. The stem is reinforced with spiral ribbing to strengthen critical stress areas. No detail is overlooked in making the strongest forks around.

Spiral Stem
Reinforced spiral ribbing to strengthen critical stress areas of the stem.

Oval Tube
Oval, chrome moly steel blades.

Tange Double Butted Tubing

The double butted ends of Tange's tubing give strength to parts most subject to stress. And the central sections are thinner for necessary flexibility and, of course, lightness.

KKT Pedal Lightning-II

Serrated teeth eliminate slipping. Rotation is always smooth and sealed bearings keep out mud. Lost-wax technique allows precision and sharpness of design while lightness and durability are combined.



JUSTIVELY FOR BMX

ment! And an exclusive new 2-Speed Front Chainwheel!
 prehensive line-up of bicycle motocross products ever put together.
 es and still come up smiling.
 ghtning pedals. Takagi's quality cranks.
 i BMX toughness.
 ainwheel. You can now grab the lead by changing to
 ing nowhere.
 design,

BMX.
 nts but swear by them time after time!

ear Change System

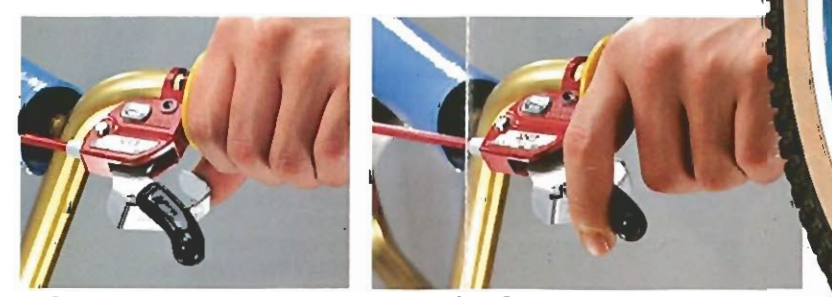
"One-Tap" finger control of the gears.
 The 2-Speed Front Chainwheel switches gear so smoothly you don't even feel it. The
 difference is in the surge of speed.
 The shift is stress-free, response is immediate and safety built-in.
 Get the lead—with Shimano's 2-Speed!



Low to High gear change.

"One-Tap Gear Change" o Shifting Lever

iently positioned right next to the hand that only a finger-tap is
 to change gears.



ear Change—High to Low. One Tap Gear Change—Low to High.



Strong

The complete line of components of
 necessary lightness to give your BMX
 know what goes into a BMX

Z-Line Crank Shimano Front Chainwh

The specially angled design provi
 optimum strength and is perfect
 transmitting powerful downward
 while pedaling. Especially suitable
 riding in a standing position with
 never hitting against the crank ar



Crank Length Easily Changed!

An eccentric circle
 allows crank arm
 length to be
 changed
 according to
 rider preference.

Tange TRX F

The Tange TRX Fork has oval tub
 made from chrome moly for stren
 where it's needed. The stem is
 reinforced with spiral ribbing to
 strengthen critical stress areas.
 No detail is overlooked in
 making the strongest forks
 around.

Oval Tube Oval, chrome moly steel blades.



Shimano-DX Front Chainwheel

Model FC-MX62 (Double)
BB-MX60 (Conversion Axle Set)

SPECIFICATIONS
Material: Light Alloy & Steel
Type: Cotterless Type, Use with Model BB-MX60
Chain Ring: Outer 40T (Material: Steel Velour Nickel Finish)
Inner 34~38T (Material: Light Alloy, Color: Red, Blue, Gold or Silver)
Crank Length: 170, 172.5, 175, 177.5, 180mm. Crank Arm can be altered to 5 different lengths (Color: Red, Blue, Gold or Silver)
Crank Thread: 9/16" x 20T
Chain Line: 42mm
Chain Pitch: 1/2" x 1/8"
Mechanism: Super W-Cut Mechanism, One Key Release and Z-Line Crank Arm



Grab the lead—with Shimano's 2-Speed! Exclusive New Double Front Chainwheel!



Crank Length Easily Changed!

Shimano-DX Front Derailleur

Model FD-MX20

SPECIFICATIONS
Capacity: Gear Difference 10Teeth or Less
Largest Gear 40T
Weight: 198g (7.0 oz.)
Material: Steel • Satin Finish (Chain Guide & Band)
CP Finish (Other Parts)
Type: Upper Inlet Type F with Outer Cable Adjust Bolt
Mechanism: Pantograph Mechanism With Inner Chain Protector



Conversion Axle Set

Model BB-MX60

SPECIFICATIONS
Material: Cr-Mo
Axle Length: 133mm
Type: Octa Joint Type with Sealed Mechanism



Shimano-DX Front Chainwheel

Model FC-MX61 (Single)
BB-MX60 (Conversion Axle Set)

SPECIFICATIONS
Material: Light Alloy
Type: Cotterless Type, Use with Model BB-MX60
Chain Ring: 39T~44T (Use Shimano Dura-Ace A Type Chain Ring)
Crank Length: 170, 172.5, 175, 177.5, 180mm. Crank Arm can be altered to 5 different lengths (Color: Red, Blue, Gold or Silver)
Crank Thread: 9/16" x 20T
Chain Line: 45.75mm
Chain Pitch: 1/2" x 1/8"
Mechanism: One Key Release and Z-Line Crank Arm



Z-LINE CRANK
Design also allows more powerful and productive pedaling

Shimano-DX Shifting Lever

Model SL-MX20

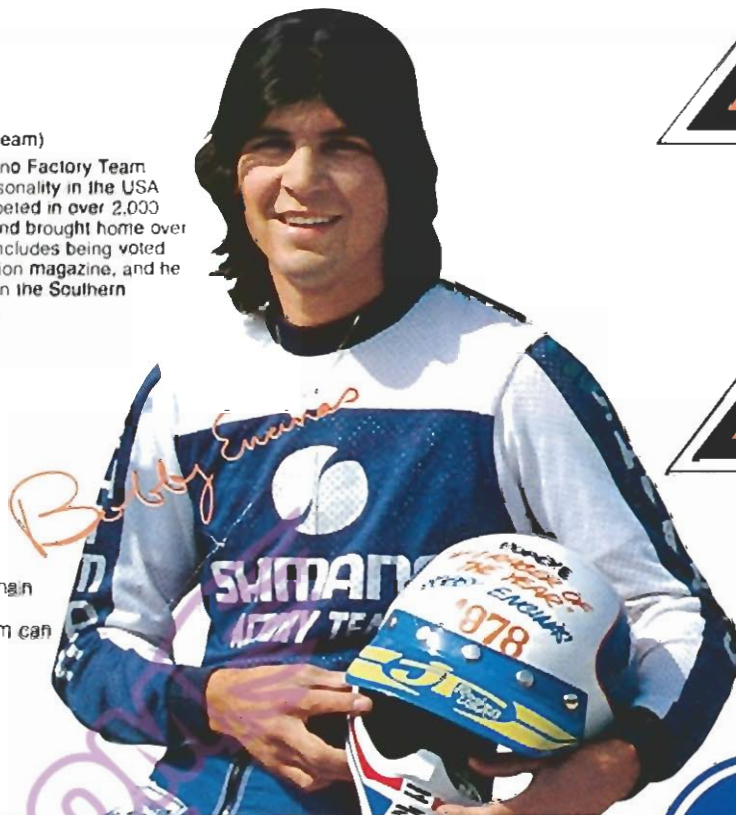
SPECIFICATIONS
Weight: 127g (4.5 oz.)
Material: Steel • Satin Finish (Bracket)
CP Finish (Other Parts)
Type: Quick Shift Type
Color: Red, Blue, Gold or Silver
Lever Clamp Diameter: 22.2mm
Attachment Position: Left Side Handle Bar
With Grip Dimension Adjust Bolt (82~75mm)



One Tap Gear Change—High to Low. One Tap Gear Change—Low to High.

Bobby Encinas
(U.S.A./Shimano Factory Team)

Bobby Encinas is the Shimano Factory Team Captain and No. 1 BMX personality in the USA and Japan. Bobby has competed in over 2,000 races in his 7 year career and brought home over 1,300 trophies. His record includes being voted the No. 1 rider by BMX Action magazine, and he is the only rider to have won the Southern California No. 1 plate twice.



Shimano-DX Brake Lever

Model BL-MX20

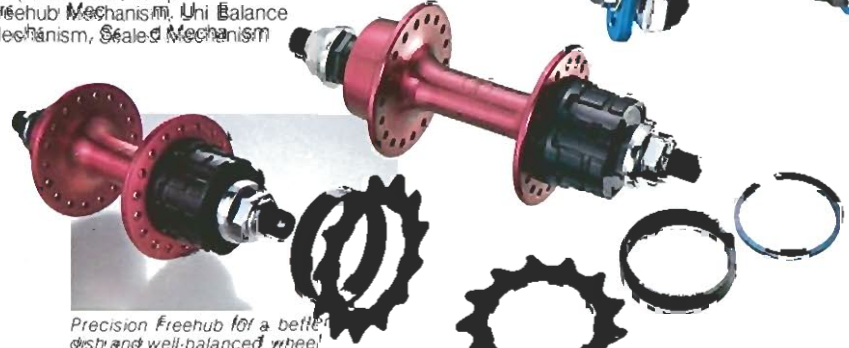
SPECIFICATIONS
Weight: 63g (2.2 oz.)
Material: Light Alloy (Lever), Steel (Bracket)
Bracket Color: Red, Blue, Gold or Silver
Lever Clamp Diameter: 22.2mm



One-Finger Touch Brake.
• Tough and durable brake which withstands all punishment.
• Lever length easily changed even by a 69n.

Shimano-DX Freehub
Model FH-MX20 (Small Flange)
(Single Speed)

SPECIFICATIONS
Material: Light Alloy
Color: Red, Blue, Gold or Silver
Weight: 188g (6.6 oz.) Front Hub 367g (12.9 oz.) Rear Freehub (W/13T Gear)
Over Lock Nut Dimensions: Front 93mm, Rear 110mm
Amount of Dish: 0.9mm
Spoke Hole: 36H
Teeth: 13 Teeth (Available by Request 12~18T)
Mechanism: Freehub Mechanism, Uni Balance Mechanism, Sealed Mechanism



Precision Freehub for a better dish and well-balanced wheel!



TOURNEY Rear Sidepull Caliper Brake

Model BR-MX10

SPECIFICATIONS
Use: With Motocross Bicycle
Material: Light Alloy
Type: Sidepull with Quick Release and Synpul Mechanism

AA	Weight (Rear)
70mm-80mm	6.2 oz. (175g)



Quick Release Mechanism provides sufficient clearance for the widest MX tire.





SHIMANO COMPONENTS

Shimano-SX Front Chainwheel Model FC-MX10 (Double Gear Only)

SPECIFICATIONS
 Type: 1-Piece Crank Type. Use with exclusive BMX 1-Piece Crank
 Material of Protector: Light Alloy (Color: Red, Blue, Gold or Silver)
 Chain Ring: Outer 40T (Material: Steel • CP Finish)
 Inner 32T (Material: Steel • CP Finish)
 Chain Line: 43.5mm
 Chain Pitch: $\frac{1}{2}$ " x $\frac{1}{16}$ "
 Mechanism: Super W-Cut Mechanism



Grab the lead—with Shimano's 2-Speed! Exclusive New Double Front Chainwheel

Shimano-SX Rear Derailleur Model RD-MX10

SPECIFICATIONS
 Material: Steel • CP Finish (Bracket)
 Capacity: Rear Sprocket 18~13 Teeth
 Weight: 215g (7.6 oz.)



TOURNEY Rear Sidepull Caliper Brake Model BR-MX20

SPECIFICATIONS
 Use: With Motocross Bicycle
 Material: Light Alloy
 Type: Sidepull with Synpul Mechanism

A-A'	Weight (Rear)
70mm-80mm	6.2oz (175g)

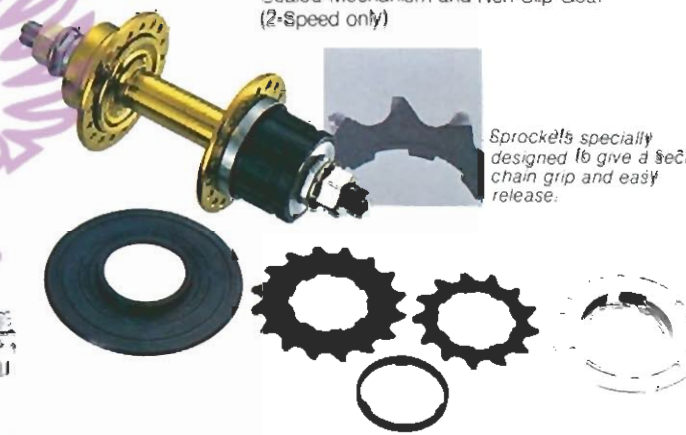


Shimano-SX Freehub Model FH-MX10 (Small Flange Single Speed)

SPECIFICATIONS
 Weight: 492g (17.4 oz.) (w/13T Gear)
 Teeth: 13 Teeth (Available by Request 12~18T)
 Other Specifications are same as below

Shimano-SX Freehub Model FH-MX12 (Small Flange 2-Speed)

SPECIFICATIONS
 Material: Steel
 Color: Red, Blue, Gold or Silver
 Over Lock Nut Dimensions: 110mm
 Amount of Dish: 2.5mm
 Spoke Hole: 36H
 Weight: 248g (8.7 oz.) Front Hub
 570g (20.1 oz.) Rear Freehub (w/13T, 16T Gears & Protector)
 Teeth: 13 • 16 Teeth with Top and Low Protector (Available with 13~18 Teeth Combination)
 Mechanism: Freehub Mechanism, Uni Balance Mechanism, Sealed Mechanism and Non-Slip Gear (2-Speed only)



Sprockets specially designed to give a secure chain grip and easy release.

Shimano 1-2 Change Hub Model SG-2S10 (MX Lock-alike)

SPECIFICATIONS
 Sprocket: $1\frac{1}{2}$ " x $1\frac{1}{8}$ " Chain
 Spoke Holes: 28H, 36H
 Spoke Size: #14 (2.0mm)
 Spare Teeth: 14T, 15T
 Gear Ratio: 1.0727
 Use: 1 • 2 Change Shifting Lever



Shimano 1-2 Change Trigger Lever Model SL-2S21 (MX Lock-alike)

SPECIFICATIONS
 Use: 1 • 2 Change Rear Hub Only
 Material: Resin & Steel
 Attachment Position: Handle Bar



Shimano-SX Front Derailleur Model FD-MX-10

SPECIFICATIONS
 Capacity: Gear Difference 10 Teeth or Less
 Largest Gear: 40T
 Weight: 198g (7.0 oz.)
 Material: Steel • CP Finish (Chain Guide)
 Zinc Finish (Other Parts)
 Type: Upper Inlet Type 1" with Outer Cable Adjust Bolt
 Mechanism: Pantagraph Mechanism With Inner Chain Protector



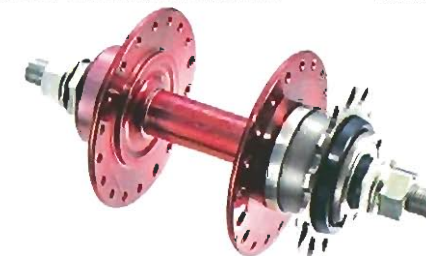
Shimano-SX Chain Tensioner Model RD-MX50

SPECIFICATIONS
 Material: Steel • CP Finish (Bracket)
 Zinc Finish (Other Parts)
 Weight: 165g (5.8 oz.)
 with Chain Line Adjust Screw



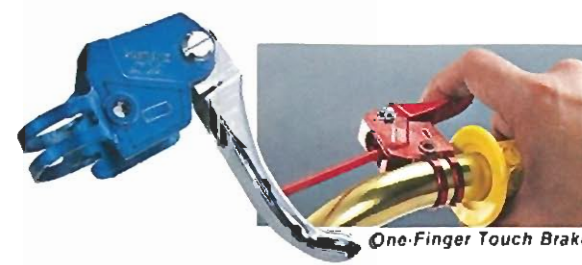
Shimano SX Freehub (A Type) Model FH-MX15 (Semi-Large Flange)

SPECIFICATIONS
 Material: Steel
 Color: Red, Blue, Gold or Silver
 Amount of Dish: 4.0mm
 Spoke Hole: 36H
 Weight: 528g (18.6 oz.) (w/13T Gear)
 Teeth: 13T
 Mechanism: Freehub Mechanism and Sealed Mechanism



Shimano-SX Brake Lever Model BL-MX11

SPECIFICATIONS
 Weight: 83g (2.9 oz.)
 Material: Steel
 Bracket Color: Red, Blue, Gold or Silver
 Lever Clamp Diameter: 22.2mm



One-Finger Touch Brake.

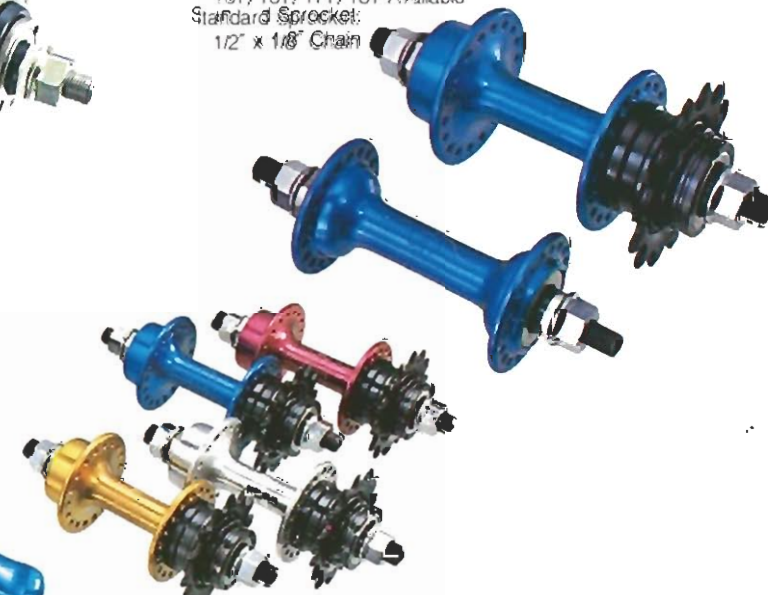
SHIMANO-BMX LEVER Model BL-MX10

SPECIFICATIONS
 Material: Steel
 Lever Clamp Diameter: 22.2mm.



Shimano BMX Freehub Model FH-MX60 FH-MX40

SPECIFICATIONS
 Use: With Motocross Bicycle
 Weight: Front 6.30z. (180g.)
 Rear 13.90z. (395g.)
 Material: Light Alloy
 Color • Surface Treatment:
 Anodized Finish (FH-MX60) /
 Silver, Gold, Red or Blue
 Buff Finish (FH-MX40) / Silver
 Painted Finish (FH-MX40) /
 Gold, Red or Blue
 Type: Small Flange Hub
 Over Lock Nut Dimensions:
 Front 3.86" (93mm.)
 Rear 4.33" (110mm.)
 Spoke Holes: 36
 Sprocket Combinations: 14T
 13T, 15T, 17T, 18T Available
 Standard Sprocket:
 $1\frac{1}{2}$ " x $1\frac{1}{8}$ " Chain



Shimano-SX Shifting Lever Model SL-MX10

SPECIFICATIONS
 Weight: 127g (4.5 oz.)
 Material: Steel • CP Finish
 Type: Quick Shift Type
 Color: Red, Blue, Gold or Silver
 Lever Clamp Diameter: 22.2mm
 Attachment Position: Left Side Handle Bar
 With Grip Dimension Adjust Bolt (82~75mm)



One Tap Gear Change—High to Low. One Tap Gear Change—Low to High.

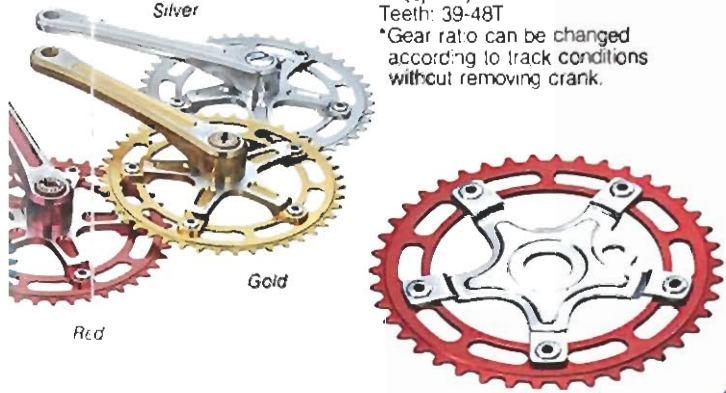
Chainwheel TAKAGI MX-SPF Type

5-Pin Type Interchangeable Sprockets
SPECIFICATIONS

Material: Duralumin • Anodized Finish
<Silver, Blue, Gold, or Red>
(Chainwheel) Steel • Chromium Finish
<Silver> (Spider)

Teeth: 39-48T

*Gear ratio can be changed according to track conditions without removing crank.



Cr-Mo Front Fork TANGE TRX

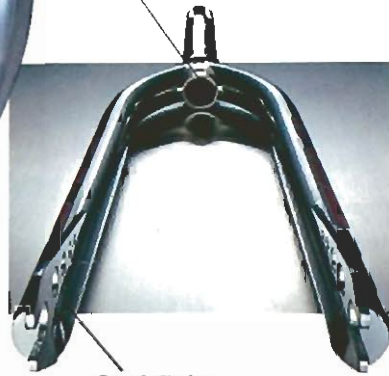
SPECIFICATIONS

For Racing.
CR-Mo Spiraled Stem.
CR-Mo Oval Blades.
With Specially Shaped Ends.
Color: Blue, Red, Gold or C.P. Finish.
Weight: 1 lb. 7oz. (652g).



Spiral Stem

Reinforced spiral ribbing to strengthen critical stress areas of the stem



Oval Tube

Oval, chrome moly steel blades.

Hi-Tension Front Fork TANGE TX-1200

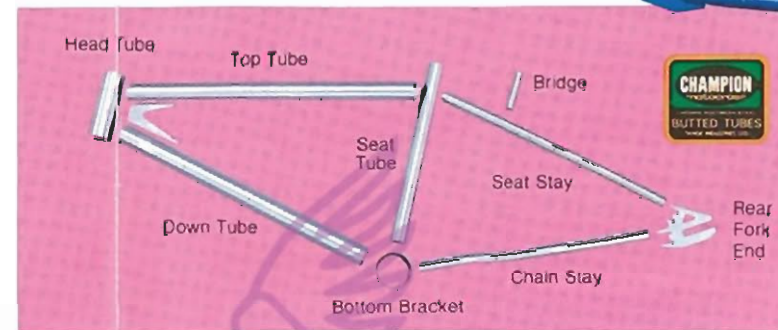
SPECIFICATIONS
For Racing & Leisure.
H.T. Butted Stem & Specially Strengthened Hi-Tension Steel Blades.
Color: Blue, Red, Gold or C.P. Finish.

Cr-Mo Front Fork TANGE TX-500W

SPECIFICATIONS
For Racing.
Cr-Mo Butted Stem & Blades.
With Specially Shaped Ends.
Color: Blue, Red, Gold or C.P. Finish.

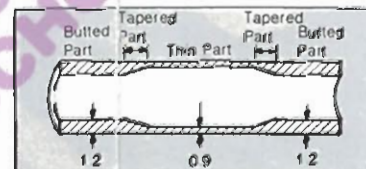


BMX FRAME SET



Frame Set TANGE Cr-Mo Double Butted Tube

SPECIFICATIONS
Top Tube: 28.6" x 1 1/4" x D.B.T.
Down Tube: 28.6" x 1 1/4" D.B.T.
Seat Tube: 25.4" x 1 1/2" x D.B.T.
Head Tube: 36.6 x 2.0
Seat Stay: 5.9 x 1.0 or 1.3
Chain Stay: 15.9 x 1.0 or 1.3



The double butted ends of Tange's tubing give strength to the points most subject to stress and tension along with improved welding. And the central section of the tube has been made thinner for the necessary flexibility in coping with the demands of BMX racing. This perfect balance, used for the first time ever in BMX racing, can only be found in Tange's Double Butted Tubing.

COMPOSITION

C	Si	Mn	P	S	Cr
0.03%	0.35%	0.15%	0.25%	0.03%	Max. 0.03%

Frame Set TANGE Cr-Mo P.G. Tube

SPECIFICATIONS
Top Tube: 25.4 x 1.2
Down Tube: 25.4 x 1.2
Seat Tube: 25.4 x 1.2
Head Tube: 36.6 x 2.0
Seat Stay: 15.9 x 1.2
Chain Stay: 15.9 x 1.2

Frame Set TANGE Mangalay Tube

SPECIFICATIONS
Manganese Alloy Tubing
Top Tube: 25.4 x 1.2
Down Tube: 25.4 x 1.3
Seat Tube: 25.4 x 1.3
Head Tube: 36.5 x 2.0
Seat Stay: 15.9 x 1.3
Chain Stay: 15.9 x 1.3

A futuristic material for bicycle frames has appeared in the shape of Tange's Mangalay Tubing. Almost as strong as Cr-Mo, Mangalay is far superior to work with in welding and for manufacturing processes. This revolutionary material will be in great demand for bicycle frames throughout the BMX industry.

COMPOSITION

C	Si	Mn	P	S	Cr	Ti
0.09%	0.23%	0.67%	0.06%	0.02%	0.29%	0.04%

Bottom Bracket Set TANGE BMX SEAT POST

SPECIFICATIONS
Weight: 210g
Material: Cr-Mo
Color: C.P. Finish
Length: 270mm.



TANGE BMX SEAT CLAMP

SPECIFICATIONS
Weight: 41g
Material: A6051 (S19)
Honing Finish
Color: Blue, Red, Gold, Silver and Black

Conversion Kit TANGE CV-170

SPECIFICATIONS
Axle: CR-Mo, Black Finish, Cotterless Type
Cone: Carbon Steel, Zinc Plating (U.P.)/Body
Bottom Bracket: Carbon Steel, Zinc Plating (U.P.)/Body
Ball: 1/16" x piece



Bottom Bracket Set TANGE OPC

SPECIFICATIONS
(For One Piece Crank)
Type: Standard Type, Wrench Type
Cup Thread: 24 or 28 Threads

Head Set TANGE MX No.5

SPECIFICATIONS
Weight: 125g
Material: Light Alloy
Anodized Finished (Body)
Thread: 25.4 x 24T

Head Set TANGE MX No.2

SPECIFICATIONS
Weight: 160g
Material: Carbon Steel (Body)
Thread: 25.4 x 24T

Head Set TANGE MX No.3

SPECIFICATIONS
Weight: 150g
Material: Carbon Steel (Body)
Thread: 25.4 x 24T

Head Set TANGE AW-27

SPECIFICATIONS
Weight: 162g
Material: Carbon Steel (Body)
Thread: 25.4 x 24T



TANGE MX WRENCH

SPECIFICATIONS
Cr-Mo, For BMX Racing

TANGE SP WRENCH

SPECIFICATIONS
Cr-Mo, For BMX Racing & Leisure

POCKET WRENCH

SPECIFICATIONS
Steel, For BMX Racing Head Set



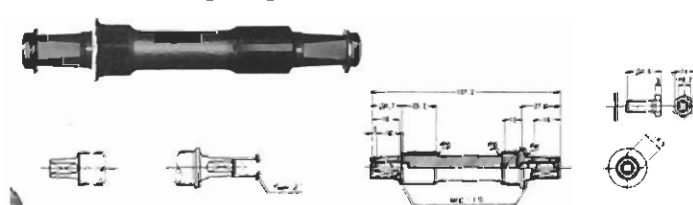
Bottom Bracket Parts TAKAGI Model 120-P

For One Piece Crank
SPECIFICATIONS
Cup Thread: 24 or 28 Threads



Bottom Bracket Parts TAKAGI B.B. AXLE & NUTS

Conversion Shaft for One Piece Crank Hanger Lug



Bottom Bracket Parts TAKAGI CONVERSION SET

Conversion Shaft for One Piece Crank Hanger Lug
SPECIFICATIONS
Cup Thread: 24 or 28 Threads



Assembly View

Rim
ARAYA Model 7X



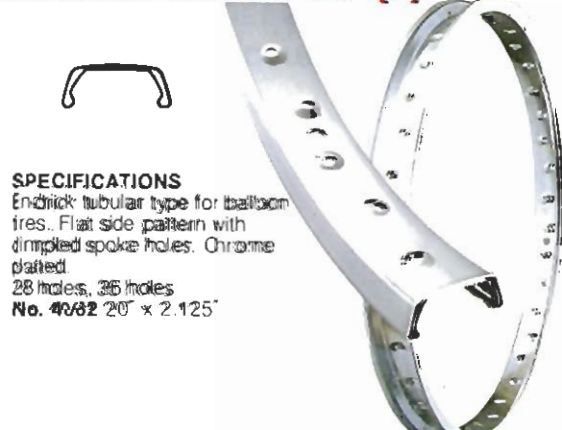
SPECIFICATIONS
Aluminum light alloy rim for bicycle motocross.
Blue, Red, Gold, Silver anodized.
36 holes
26" x 1.75" or 2.125"
24" x 1.75" or 2.125"
20" x 1.75" or 2.125"
16" x 1.75" or 2.125"

Rim
ARAYA Model 7C



SPECIFICATIONS
Aluminum light alloy rim for bicycle motocross.
Blue, Red, Gold, Silver anodized.
36 holes
20" x 1.75" or 2.125"

Rim
ARAYA Model 17 (3)



SPECIFICATIONS
Endrick tubular type for balloon tires. Flat side pattern with dimpled spoke holes. Chrome plated.
28 holes, 36 holes
No. 3982 20" x 1.75"

Rim
ARAYA Model 7C TWO-TONE Color



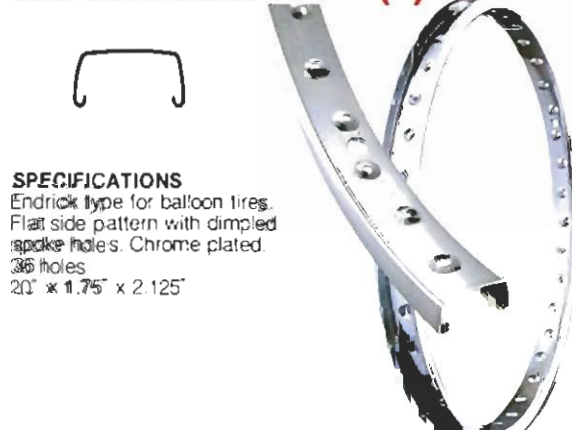
SPECIFICATIONS
Aluminum light alloy rim for bicycle motocross.
Blue, Red, Gold anodized.
36 holes
20" x 1.75" or 2.125"
TWO-TONE Color

Rim
ARAYA Model 17 (1)



SPECIFICATIONS
Endrick tubular type for balloon tires. Flat side pattern. Chrome plated.
36 holes
No. 3985 26" x 1.75" or 2.125"
28 holes, 36 holes
No. 3986 24" x 1.75" or 2.125"
No. 3987 20" x 1.75" or 2.125" Dimpled spoke holes
20 holes, 28 holes
No. 3988 16" x 1.75" or 2.125"

Rim
ARAYA Model 17 (4)



SPECIFICATIONS
Endrick type for balloon tires. Flat side pattern with dimpled spoke holes. Chrome plated.
36 holes
20" x 1.75" x 2.125"

Pedal
KKT Model RT-L-MX (LIGHTNING-II)

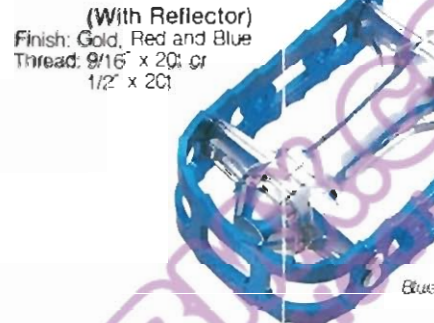
SPECIFICATIONS
Material: Body/Light Alloy Los: Wax Process
Spindle/Cr-Mo Steel Frame/Light Alloy
Mechanism: Sealed Bearings Inside Dust and Water Proof Sealings
Size: 60mm. (2-5/16")
Width: 61mm. (2-3/8")
Weight: 370g. (13.1 oz.)
: 445g. (15.7 oz.)
(With Reflector)
Finish: Gold, Red and Blue
Thread: 9/16" x 20t or 1/2" x 20t
Frame Exchangeable with 5mm Hexagon Wrench Key



Serrated teeth eliminate slipping. Rotation is always smooth. Sealed bearings keep out mud. Micro-fusion technique allows precision and sharpness of design while lightness and durability are combined.

Pedal
KKT Model RT-F-MX (LIGHTNING)

SPECIFICATIONS
Material: Body/Casting Light Alloy
Spindle/Cr-Mo Steel
Frame/Light Alloy
Size: 60mm. (2-5/16")
Width: 60mm. (2-5/16")
Weight: 370g. (13.1 oz.)
: 360g. (12.7 oz.)
: 435g. (15.4 oz.)
(With Reflector)
Finish: Gold, Red and Blue
Thread: 9/16" x 20t or 1/2" x 20t



Pedal
Model RT-K-MX

SPECIFICATIONS
Size: 82mm. (3-1/4")
Width: 60mm. (2-5/16")
Weight: 540g. (19.0 oz.)
Spindle: Cr-Mo Steel
Finish: Black, Gold, Red, Blue, or C.P.
Thread: 9/16" x 20t or 1/2" x 20t
Conforms with C.P.S.C. Regulations.



Pedal
KKT Model RT-B-MX

SPECIFICATIONS
Size: 95mm. (3-3/4")
Width: 61mm. (2-3/8")
Weight: 630g. (22.2 oz.)
Spindle: Cr-Mo Steel
Finish: Black, Gold, Red, Blue, or C.P.
Thread: 9/16" x 20t or 1/2" x 20t
Conforms with C.P.S.C. Regulations.



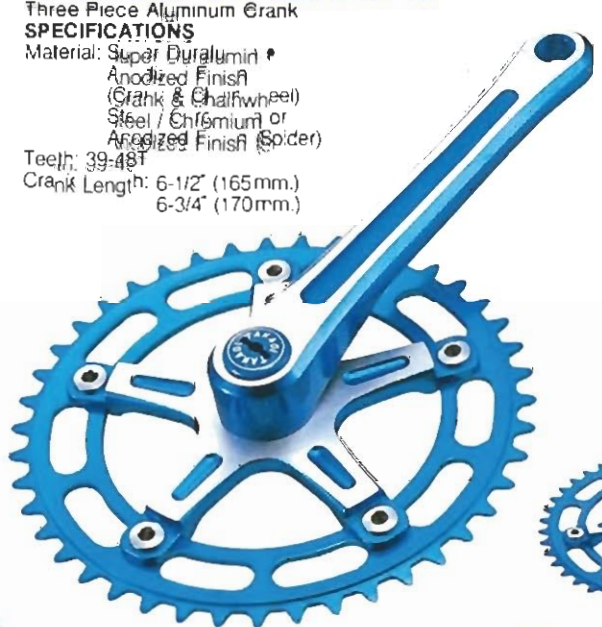
Pedal
KKT Model RT-E-MX

SPECIFICATIONS
Size: 99mm. (3-29/32")
Width: 78mm. (3-1/16")
Weight: 530g. (18.7 oz.)
Spindle: Cr-Mo Steel
Finish: C.P. or Black
Thread: 9/16" x 20t or 1/2" x 20t
Conforms with C.P.S.C. Regulations.



Chainwheel & Crank
TAKAGI TO-MX-SPA

Three Piece Aluminum Crank
SPECIFICATIONS
Material: Super Duralumin
Anodized Finish
(Crank & Chainwheel)
Steel / Chromium or Anodized Finish (Solder)
Teeth: 39-48T
Crank Length: 6-1/2" (165mm.)
6-3/4" (170mm.)



Chainwheel
TAKAGI MX-SP Type

Standard Type
SPECIFICATIONS
Material: Duralumin / Anodized Finish
<Silver, Blue, Gold or Red> or Steel / Chromium Finish
<Silver or Black>
Teeth: 39-48T



One Piece Crank
TAKAGI MX Type (Cr-Mo)

SPECIFICATIONS
Material: Chromium Molybdenum Steel / Heat Treated Chromium Finish
<Silver, Gold, or Black>
Crank Length: 165mm., 170mm., 175mm.
Bracket's Shell Width: 68mm.
Crank Thread: 1/2" x 20T



Bottom Bracket Parts

TAKAGI Model TKG

SPECIFICATIONS
Cup Thread: English 1.37" x 24t
French 35 x 1.0.
Italian 30 x 24t



Bottom Bracket Parts

TAKAGI B.B. AXLE & NUTS

For TOURNEY Type



Size chart:

Length of BB Shell	Mark	L	l ₁	l ₂	l ₃	l ₄	l ₅
68mm	3S	144.5	124.5	35	52	37.5	15 15
	3T	146	126	35	52	39	15 15
	3U	147.5	127.5	35	52	40.5	15 15
	3R	149	129	35	52	42	15 15
	3S	147.5	127.5	35	55	37.5	15 15
70 or 71mm	3T	149	129	35	55	39	15 15
	3U	150.5	130.5	35	55	40.5	15 15
	3R	152	132	35	55	42	15 16.5

THE START!



ARAYA
Rim

KKT KYOKUTO
Pedal

TAKAGI
Front Chainwheel
Bottom Bracket Parts

Tange
Frame Set
Front Fork
Seat Post
Head Set
Seat Clamp
Bottom Bracket Parts

SHIMANO
Front Chainwheel
Front Derailleur
Rear Derailleur
Chain Tensioner
Shifting Lever
Freehub
Brake
Brake Lever



Shimano Factory Team

BMX RACING COMPONENTS

SPECIFICATION CHART

ARAYA BMX Rim

Model	Material	Use	Holes	Size
Model 7X	Aluminium Light Alloy	Balloon Tires	36	26" x 1.75" or 2 1/2" 24" x 1.75" or 2 1/2" 20" x 1.75" or 2 1/2" 16" x 1.75" or 2 1/2"
Model 7C	Aluminium Light Alloy	Balloon Tires	36	20" x 1.75" or 2 1/2" 30" x 1.75" or 2 1/2" TWO-TONE Color
Model 17 (1)	Endrick Tubular Chrome Plated	Balloon Tires	36	20" x 2 1/2"
Model 17 (3)	Endrick Tubular Chrome Plated	Balloon Tires	36	20" x 2 1/2"
Model 17 (4)	Endrick Type Chrome Plated	Balloon Tires	36	20" x 1.75" or 2 1/2"

KKT KYOKUTO BMX Pedal

Item	Size	Width	Weight	Finish	Spindle	Thread
RT-L-MX	60mm (2-5/16")	61mm (2-3/8")	360g (12.7oz)	Spld. Red or Blue	Cr-Mo Steel	BC 9/16" x 20, NF 1/2" x 20
RT-F-MX	60mm (2-5/16")	60mm (2-5/16")	370g (13.1oz)	Black, Gold, Red, Blue, CP		
RT-R-MX	82mm (3-1/4")	60mm (2-5/16")	540g (19.0oz)	Black, Gold, Red, Blue, CP		
RT-B-MX	95mm (3-3/4")	61mm (2-3/8")	630g (22.2oz)	Black or CP		
RT-E-MX	99mm (4")	78mm (3-1/2")	530g (18.7oz)	Black or CP		

TAKAGI BMX Chainwheel & Crank

Model	Material	Type	Teeth	Crank Length
Chainwheel & Crank TO-MX-SPA	Super Duralumin (Crank & Chainwheel), Light Alloy or Steel (Spider)	Three Piece Crank	39~48T	6-1/2" (165mm), 6-3/4" (170mm)
Chainwheel MX-SP Type	Duralumin (Chainwheel) Steel (Spider)	5-Pin Interchangeable Sprockets	39~48T	---
Chainwheel MX-SPF Type	Duralumin	Standard	36~42T	---
One Piece Crank MX-Type (Cr-Mo)	Chromium Molybdenum Steel	One Piece Crank	(Cup Thread: 24T) Crank Thread: 1/2" x 20T	165mm, 170mm, 175mm

TANGE BMX Front Fork

Model	Material	Color	Others
TX For Racing	Cr-Mo Spirited Stem Cr-Mo Oval Blades	Blue, Red, Gold or C.P. Finish	With Specially Shaped Ends Weight 1 lb. 7.5z (625g)
TX-600W For Racing	Cr-Mo Butted Stem & Blades	Blue, Red, Gold or C.P. Finish	With Specially Shaped Ends
TX-1200 For Racing & Leisure	Hi-Tension Butted Stem Special Strong Hi-Tension Steel Blades	Blue, Red, Gold or C.P. Finish	---
TX-1200W For Racing & Leisure	Hi-Tension Butted Stem Special Strong Hi-Tension Steel Blades	Blue, Red, Gold or C.P. Finish	With Specially Shaped Ends

TANGE BMX Frame Set

Model	Top Tube	Down Tube	Seat Tube	Head Tube	Seat Stay	Chain Stay
Cr-Mo Double Butted Tube	28.6x1.20 9 DBT	28.6x1.20 9 DBT	25.4x1.20 9 DBT	36.6x2.9	15.9x1.0 or 1.3	15.9x1.0 or 1.3
Cr-Mo FG 60	25.4x1.2	25.4x1.2	25.4x1.2	36.6x2.9	15.9x1.2	15.9x1.2
Aluminum Tube	25.4x1.3	25.4x1.3	25.4x1.3	36.6x2.0	15.9x1.3	15.9x1.3

SHIMANO SYSTEM COMPONENTS

Front Chainwheel

Model	Material	Chaining	Crank Thread	Color	Mechanism
Shimano-DX (Double) Model FG-MX2	Light Alloy & Steel	Outer: 40T Inner: 34~38T	1/2" x 20T	Red, Blue, Gold, Silver	Super W-Cut Z-Line Crank Arm One Key Release
Shimano-DX (Single) Model FG-MX1	Light Alloy	39T~44T	1/2" x 20T	Red, Blue, Gold, Silver	Z-Line Crank Arm One Key Release
Conversion Axle Set Model BB-LX60	Cr-Mo	Axle Length 133mm	---	---	Octa Joint Type Sprocket Mechanism
Shimano-SX (Double) Model FG-MX10	Light Alloy & Steel	Outer: 40T Inner: 32T	(One piece Crank Type)	Red, Blue, Gold, Silver	Super W-Cut

Front Derailleur

Model	Capacity	Weight	Material	Mechanism
Shimano-DX Model FD-MX20	Gear Difference: 10 Teeth or Less Largest Gear: 40T	198g (7.0oz)	Steel: Satin & CP Finish	Biograph Mechanism With Inner Chain Protector
Shimano-SX Model FD-MX10	Gear Difference: 10 Teeth or Less Largest Gear: 40T	198g (7.0oz)	Steel: CP & Zinc Finish	Chain Protector

Shifting Lever

Model	Weight	Material	Lever Clamp Diameter	Others
Shimano-DX Model SL-MX20	127g (4.5oz)	Steel: Satin & CP Finish	22.2mm	Quick Shift Type Attachment Position, Left Side Handle Bar
Shimano-SX Model SL-MX10	127g (4.5oz)	Steel: CP Finish	22.2mm	With Grip Dimension Adjust Bolt (62~75mm)

Chain Tensioner

Model	Weight	Material	Others
Shimano-DX Model RD-MX20	167g (5.9oz)	Steel: Satin & CP Finish	With Chain Line Adjust Screw
Shimano-SX Model RD-MX10	165g (5.8oz)	Steel: CP & Zinc Finish	With Chain Line Adjust Screw

Rear Derailleur

Model	Capacity	Weight	Material
Shimano-SX Model RD-MX10	Rear Sprocket 18~13T	215g (7.6oz)	Steel: CP & Zinc Finish

Freehub

Model	Weight	Material	Amount of Dish	Teeth	Mechanism
Shimano-DX Model FH-MX20 (Single Speed)	Front: 188g (6.6z) Rear: 367g (12.9oz) (w/13T Gear)	Light Alloy	0.9mm	13T (Available 12~18T)	Freehub, Uni Balance Sealed Mechanism
Shimano-SX (Small) Model FH-MX10 (Single Speed)	Front: 248g (8.7oz) Rear: 492g (17.4oz) (w/13T gear)	Steel	2.5mm	13T (Available 12~18T)	Freehub, Uni Balance Sealed Mechanism
Shimano-SX (Small) Model FH-MX12 (2-Speed)	Front: 248g (8.7oz) Rear: 570g (20.1oz) (w/13T, 16T gears)	Steel	2.5mm	13-16T (Available 13~18T)	Freehub, Uni Balance Sealed Non-Slip Gear
Shimano-SX (A-Type) Model FH-MX15 (Semi Large)	Rear: 528g (18.6oz) (w/13T Gear)	Steel	4.2mm	13T	Freehub, Sealed Mechanism
Model FH-MX60 (Anodized Finish)	Front: 180g (6.3oz) Rear: 395g (13.9oz) (w/14T)	Light Alloy	---	14T (Available 13~18T)	Freehub Mechanism

JMB INFORMATION CENTER:
SHIMANO SALES CORPORATION
 9259 San Fernando Road, Sun Valley, California 91352 Tel. 213-767-7777
SHIMANO AMERICAN CORPORATION
 205 Jefferson Road Parsippany, New Jersey 07054 U.S.A. Tel. 201-884-2309
SHIMANO (EUROPA) GmbH
 Professor Oehler Str. 9, 4000 Dusseldorf 13, West Germany Tel. 493097198

